

# Spade Terminals: Locking S SERIES

## FEATURES

### VINYL:

Tongue snaps around the screw & terminal is locked into place until the mounting screw can be tightened down.

Electro tin plated copper, vinyl (PVC) 300V, 75 °C.



### UN-INSULATED:

Tongue snaps around the screw & terminal is locked into place until the mounting screw can be tightened down.

Electro tin plated copper, 600V, 105 °C.



### NYLON:

Tongue snaps around the screw & terminal is locked into place until the mounting screw can be tightened down.

Electro tin plated copper, easy-entry Nylon, 600V, 105 °C.



INSULATION TYPE	WIRE RANGE	STUD SIZE
Vinyl	22-18	#10
Vinyl	22-18	#6
Vinyl	22-18	#8
Vinyl	16-14	#10
Vinyl	16-14	#6
Vinyl	16-14	#8
Vinyl	12-10	#10
Vinyl	12-10	#6
Vinyl	12-10	#8
Un-insulated	22-18	#10
Un-insulated	22-18	#6
Un-insulated	22-18	#8
Un-insulated	16-14	#10
Un-insulated	16-14	#6
Un-insulated	16-14	#8
Un-insulated	12-10	#10
Un-insulated	12-10	#6
Un-insulated	12-10	#8
Nylon	22-18	#8
Nylon	16-14	#10
Nylon	16-14	#6
Nylon	16-14	#8
Nylon	12-10	#10
Nylon	12-10	#8



		PRO PACKS		STD PACKS		BULK PACKS	
LENGTH (IN)	WIDTH (IN)	CAT. NO.	QTY	CAT. NO.	QTY	CAT. NO.	QTY
0.827	0.315	-	-	<b>S22-10V-L</b>	100	<b>S22-10V-L-BULK</b>	1000
0.827	0.228	-	-	<b>S22-6V-L</b>	100	<b>S22-6V-L-BULK</b>	1000
0.827	0.315	-	-	<b>S22-8V-L</b>	100	<b>S22-8V-L-BULK</b>	1000
0.866	0.335	<b>S16-10V-L-P</b>	85	<b>S16-10V-L</b>	100	<b>S16-10V-L-BULK</b>	1000
0.827	0.228	-	-	<b>S16-6V-L</b>	100	<b>S16-6V-L-BULK</b>	1000
0.827	0.283	<b>S16-8V-L-P</b>	85	<b>S16-8V-L</b>	50	<b>S16-8V-L-BULK</b>	1000
0.992	0.374	-	-	<b>S12-10V-L</b>	50	<b>S12-10V-L-BULK</b>	500
0.992	0.335	-	-	<b>S12-6V-L</b>	50	<b>S12-6V-L-BULK</b>	500
0.992	0.335	-	-	<b>S12-8V-L</b>	50	<b>S12-8V-L-BULK</b>	500
0.694	0.340	-	-	<b>S22-10-L</b>	100	<b>S22-10-L-BULK</b>	1000
0.585	0.260	-	-	<b>S22-6-L</b>	100	<b>S22-6-L-BULK</b>	1000
0.646	0.261	-	-	<b>S22-8-L</b>	100	<b>S22-8-L-BULK</b>	1000
0.694	0.340	-	-	<b>S16-10-L</b>	100	<b>S16-10-L-BULK</b>	1000
0.585	0.260	-	-	<b>S16-6-L</b>	100	<b>S16-6-L-BULK</b>	1000
0.646	0.320	-	-	<b>S16-8-L</b>	100	<b>S16-8-L-BULK</b>	1000
0.773	0.340	-	-	<b>S12-10-L</b>	50	<b>S12-10-L-BULK</b>	1000
0.664	0.260	-	-	<b>S12-6-L</b>	50	<b>S12-6-L-BULK</b>	1000
0.646	0.261	-	-	<b>S12-8-L</b>	50	<b>S12-8-L-BULK</b>	1000
0.866	0.315	-	-	<b>S22-8N-L</b>	100	<b>S22-8N-L-BULK</b>	1000
0.906	0.335	-	-	<b>S16-10N-L</b>	100	<b>S16-10N-L-BULK</b>	1000
0.866	0.328	-	-	<b>S16-6N-L</b>	100	<b>S16-6N-L-BULK</b>	1000
0.866	0.283	-	-	<b>S16-8N-L</b>	100	<b>S16-8N-L-BULK</b>	1000
1.012	0.374	-	-	<b>S12-10N-L</b>	50	<b>S12-10N-L-BULK</b>	1000
1.012	0.335	-	-	<b>S12-8N-L</b>	50	<b>S12-8N-L-BULK</b>	1000

# Spade Terminals Flange & Block S SERIES

## FEATURES

### FLANGE SPADES VINYL:

Turned up edges give this spade more safety and reliability. Flanges give a location and locking action that aid in installation.

Electro tin plated copper, vinyl (PVC) 300V, 75 °C.

### UN-INSULATED:

Electro tin plated copper, 600V, 105 °C.

### NYLON:

Turned up edges give this spade more safety and reliability. Flanges give a location and locking action that aid in installation.

Electro tin plated copper, easy-entry Nylon, 600V, 105 °C.

### BLOCK SPADES VINYL:

Similar tongue style to a spade, block spades have longer, flatter sides designed for use in terminal blocks.

Electro tin plated copper with brazed seam, Vinyl (PVC), 300V, 75 °C.

### UN-INSULATED:

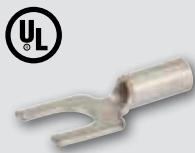
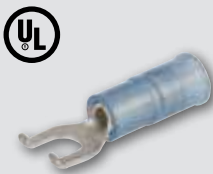
Similar tongue style to a spade, block spades have longer, flatter sides designed for use in terminal blocks.

Electro tin plated copper with brazed seam, 600V, 105 °C.

### NYLON:

Similar tongue style to a spade, block spades have longer, flatter sides designed for use in terminal blocks.

Electro tin plated copper with brazed seam, easy-entry Nylon, 600V, 105 °C.



INSULATION TYPE	WIRE RANGE	STUD SIZE	CERTIFICATION VARIANCE
<b>FLANGE SPADES</b>			
Vinyl	22-18	#6	
Vinyl	22-18	#8	
Vinyl	16-14	#10	
Vinyl	16-14	#6	
Vinyl	16-14	#8	
Vinyl	12-10	#10	
Vinyl	12-10	#8	
Un-insulated	16-14	#10	
Un-insulated	16-14	#6	
Nylon	22-18	#6	
Nylon	16-14	#10	
Nylon	16-14	#6	
Nylon	16-14	#8	
Nylon	12-10	#10	
<b>BLOCK SPADES</b>			
Vinyl	22-18	#10	
Vinyl	22-18	#6	
Vinyl	22-18	#8	
Vinyl	16-14	#10	
Vinyl	16-14	#6	
Vinyl	16-14	#8	
Un-insulated	22-18	#6	
Un-insulated	22-18	#8	
Un-insulated	16-14	#10	NON-UL
Un-insulated	16-14	#6	NON-UL
Un-insulated	16-14	#8	NON-UL
Nylon	22-18	#10	
Nylon	22-18	#6	
Nylon	16-14	#10	NON-UL
Nylon	16-14	#6	
Nylon	16-14	#8	



PRO PACKS				STD PACKS		BULK PACKS	
LENGTH (IN)	WIDTH (IN)	CAT. NO.	QTY	CAT. NO.	QTY	CAT. NO.	QTY
0.836	0.301	-	-	<b>S22-6V-F</b>	100	<b>S22-6V-F-BULK</b>	1000
0.836	0.301	-	-	<b>S22-8V-F</b>	100	<b>S22-8V-F-BULK</b>	1000
0.850	0.301	-	-	<b>S16-10V-F</b>	100	<b>S16-10V-F-BULK</b>	1000
0.850	0.301	-	-	<b>S16-6V-F</b>	100	<b>S16-6V-F-BULK</b>	1000
0.850	0.301	-	-	<b>S16-8V-F</b>	100	<b>S16-8V-F-BULK</b>	1000
1.075	0.320	-	-	<b>S12-10V-F</b>	50	<b>S12-10V-F-BULK</b>	1000
1.075	0.320	-	-	<b>S12-8V-F</b>	50	<b>S12-8V-F-BULK</b>	1000
0.635	0.300	-	-	<b>S16-10-F</b>	100	<b>S16-10-F-BULK</b>	1000
0.570	0.301	-	-	<b>S16-6-F</b>	100	<b>S16-6-F-BULK</b>	1000
0.885	0.294	-	-	<b>S22-6N-F</b>	100	<b>S22-6N-F-BULK</b>	1000
0.910	0.293	-	-	<b>S16-10N-F</b>	100	<b>S16-10N-F-BULK</b>	1000
0.910	0.293	-	-	<b>S16-6N-F</b>	100	<b>S16-6N-F-BULK</b>	1000
0.908	0.294	-	-	<b>S16-8N-F</b>	100	<b>S16-8N-F-BULK</b>	1000
0.770	0.385	-	-	<b>S12-10N-F</b>	50	<b>S12-10N-F-BULK</b>	1000
0.831	0.297	-	-	<b>S22-10V-B</b>	100	<b>S22-10V-B-BULK</b>	1000
0.560	0.301	-	-	<b>S22-6V-B</b>	100	<b>S22-6V-B-BULK</b>	1000
0.822	0.296	-	-	<b>S22-8V-B</b>	100	<b>S22-8V-B-BULK</b>	1000
				<b>S16-10V-B</b>	100	<b>S16-10V-BULK</b>	1000
0.828	0.251	-	-	<b>S16-6V-B</b>	100	<b>S16-6V-B-BULK</b>	1000
0.781	0.295	-	-	<b>S16-8V-B</b>	100	<b>S16-8V-B-BULK</b>	1000
0.560	0.255	-	-	<b>S22-6-B</b>	100	<b>S22-6-B-BULK</b>	1000
0.560	0.301	-	-	<b>S22-8-B</b>	100	<b>S22-8-B-BULK</b>	1000
0.560	0.301	-	-	<b>S16-10-B</b>	100	<b>S16-10-B-BULK</b>	1000
0.736	0.332	-	-	<b>S16-6-B</b>	100	<b>S16-6-B-BULK</b>	1000
0.736	0.329	-	-	<b>S16-8-B</b>	100	<b>S16-8-B-BULK</b>	1000
0.904	0.293	-	-	<b>S22-10N-B</b>	100	<b>S22-10N-B-BULK</b>	1000
0.904	0.297	-	-	<b>S22-6N-B</b>	100	<b>S22-6N-B-BULK</b>	1000
0.556	0.305	-	-	<b>S16-10N-B</b>	100	<b>S16-10N-B-BULK</b>	1000
0.940	0.245	-	-	<b>S16-6N-B</b>	100	<b>S16-6N-B-BULK</b>	1000
0.940	0.295	-	-	<b>S16-8N-B</b>	100	<b>S16-8N-B-BULK</b>	1000

FEATURES

**VINYL:**

Open tongue end for rapid insertion on the mounting screw. Typically used on free-standing studs.

Electro tin plated copper, vinyl (PVC) 300V, 75 °C.



**UN-INSULATED:**

Open tongue end for rapid insertion on the mounting screw. Typically used on free-standing studs.

Electro tin plated copper, 600V, 105 °C.



**NYLON:**

Open tongue end for rapid insertion on the mounting screw. Typically used on free-standing studs.

Electro tin plated copper, easy-entry Nylon, 600V, 105 °C.



INSULATION TYPE	WIRE RANGE	STUD SIZE	CERTIFICATION VARIANCE
Vinyl	22-18	1/4	
Vinyl	22-18	#10	
Vinyl	22-18	#4	UL
Vinyl	22-18	#6	
Vinyl	22-18	#8	
Vinyl	16-14	1/4	
Vinyl	16-14	#10	
Vinyl	16-14	#6	
Vinyl	16-14	#8	
Vinyl	12-10	1/4	
Vinyl	12-10	#10	
Vinyl	12-10	#6	
Vinyl	12-10	#8	
Un-insulated	22-18	#10	UL
Un-insulated	22-18	#4	UL
Un-insulated	22-18	#6	
Un-insulated	22-18	#8	UL
Un-insulated	16-14	#10	
Un-insulated	16-14	#6	
Un-insulated	16-14	#8	UL
Un-insulated	12-10	1/4	NON-UL
Un-insulated	12-10	#10	
Un-insulated	12-10	#6	UL
Un-insulated	12-10	#8	
Un-insulated	8	1/4	NON-UL
Un-insulated	8	#10	NON-UL
Nylon	22-18	#10	UL
Nylon	22-18	#4	UL
Nylon	22-18	#6	UL
Nylon	22-18	#8	UL
Nylon	16-14	1/4	NON-UL
Nylon	16-14	#10	
Nylon	16-14	#6	
Nylon	16-14	#8	
Nylon	12-10	1/4	
Nylon	12-10	#10	
Nylon	12-10	#6	
Nylon	12-10	#8	
Nylon	8	1/4	NON-UL
Nylon	8	#10	NON-UL

		"S" PACKS		PRO PACKS		STD PACKS		BULK PACKS	
L (IN)	W (IN)	CAT. NO.	QTY	CAT. NO.	QTY	CAT. NO.	QTY	CAT. NO.	QTY
1.070	0.472	–	–	–	–	<b>S22-14V</b>	100	<b>S22-14V-BULK</b>	1000
0.826	0.374	<b>S22-10V-S</b>	25	<b>S22-10V-P</b>	100	<b>S22-10V</b>	100	<b>S22-10V-BULK</b>	1000
0.817	0.251	–	–	–	–	<b>S22-4V</b>	100	<b>S22-4V-BULK</b>	1000
0.826	0.228	<b>S22-6V-S</b>	25	<b>S22-6V-P</b>	100	<b>S22-6V</b>	100	<b>S22-6V-BULK</b>	1000
0.826	0.283	<b>S22-8V-S</b>	25	<b>S22-8V-P</b>	100	<b>S22-8V</b>	100	<b>S22-8V-BULK</b>	1000
0.812	0.543	–	–	–	–	<b>S16-14V</b>	100	<b>S16-14V-BULK</b>	1000
0.966	0.362	<b>S16-10V-S</b>	20	<b>S16-10V-P</b>	85	<b>S16-10V</b>	100	<b>S16-10V-BULK</b>	1000
0.966	0.388	<b>S16-6V-S</b>	20	<b>S16-6V-P</b>	85	<b>S16-6V</b>	100	<b>S16-6V-BULK</b>	1000
1.103	0.388	<b>S16-8V-S</b>	20	<b>S16-8V-P</b>	85	<b>S16-8V</b>	100	<b>S16-8V-BULK</b>	1000
1.103	0.375	<b>S12-14V-S</b>	12	<b>S12-14V-P</b>	40	<b>S12-14V</b>	50	<b>S12-14V-BULK</b>	500
1.103	0.375	<b>S12-10V-S</b>	15	<b>S12-10V-P</b>	50	<b>S12-10V</b>	50	<b>S12-10V-BULK</b>	500
1.103	0.375	<b>S12-6V-S</b>	15	<b>S12-6V-P</b>	50	<b>S12-6V</b>	50	<b>S12-6V-BULK</b>	500
0.690	0.316	<b>S12-8V-S</b>	15	<b>S12-8V-P</b>	50	<b>S12-8V</b>	50	<b>S12-8V-BULK</b>	500
0.623	0.251	–	–	–	–	<b>S22-10</b>	100	<b>S22-10-BULK</b>	1000
0.629	0.228	–	–	–	–	<b>S22-4</b>	100	<b>S22-4-BULK</b>	1000
0.778	0.316	–	–	–	–	<b>S22-6</b>	100	<b>S22-6-BULK</b>	1000
0.770	0.388	–	–	–	–	<b>S22-8</b>	100	<b>S22-8-BULK</b>	1000
0.638	0.245	–	–	<b>S16-10-P</b>	100	<b>S16-10</b>	100	<b>S16-10-BULK</b>	1000
0.635	0.295	–	–	–	–	<b>S16-6</b>	100	<b>S16-6-BULK</b>	1000
1.000	0.492	–	–	<b>S16-8-P</b>	100	<b>S16-8</b>	100	<b>S16-8-BULK</b>	1000
0.812	0.375	–	–	–	–	<b>S12-14</b>	50	<b>S12-14-BULK</b>	1000
0.812	0.375	–	–	–	–	<b>S12-10</b>	50	<b>S12-10-BULK</b>	1000
0.812	0.375	–	–	–	–	<b>S12-6</b>	50	<b>S12-6-BULK</b>	1000
0.953	0.471	–	–	–	–	<b>S12-8</b>	50	<b>S12-8-BULK</b>	1000
0.956	0.471	–	–	–	–	<b>S8-14</b>	50	<b>S8-14-BULK</b>	100
1.033	0.322	–	–	–	–	<b>S8-10</b>	50	<b>S8-10-BULK</b>	100
0.727	0.187	–	–	–	–	<b>S22-10N</b>	100	<b>S22-10N-BULK</b>	1000
1.031	0.319	–	–	–	–	<b>S22-4N</b>	100	<b>S22-4N-BULK</b>	1000
0.898	0.286	–	–	–	–	<b>S22-6N</b>	100	<b>S22-6N-BULK</b>	1000
1.022	0.472	–	–	–	–	<b>S22-8N</b>	100	<b>S22-8N-BULK</b>	1000
0.898	0.338	–	–	–	–	<b>S16-14N</b>	100	<b>S16-14N-BULK</b>	1000
0.855	0.255	–	–	–	–	<b>S16-10N</b>	100	<b>S16-10N-BULK</b>	1000
0.855	0.286	–	–	–	–	<b>S16-6N</b>	100	<b>S16-6N-BULK</b>	1000
1.221	0.476	–	–	–	–	<b>S16-8N</b>	100	<b>S16-8N-BULK</b>	1000
1.024	0.375	–	–	–	–	<b>S12-14N</b>	50	<b>S12-14N-BULK</b>	500
1.000	0.336	–	–	–	–	<b>S12-10N</b>	50	<b>S12-10N-BULK</b>	500
1.000	0.375	–	–	–	–	<b>S12-6N</b>	50	<b>S12-6N-BULK</b>	500
1.256	0.474	–	–	–	–	<b>S12-8N</b>	50	<b>S12-8N-BULK</b>	500
1.256	0.474	–	–	–	–	<b>S8-14N</b>	50	<b>S8-14N-BULK</b>	500
1.256	0.474	–	–	–	–	<b>S8-10N</b>	50	<b>S8-10N-BULK</b>	500